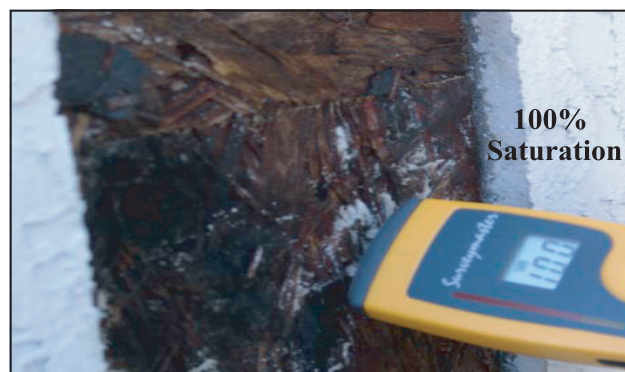
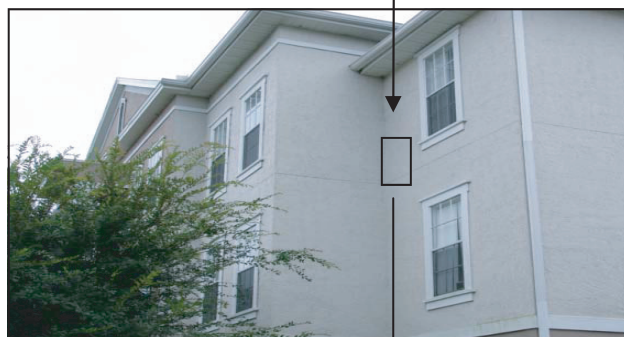
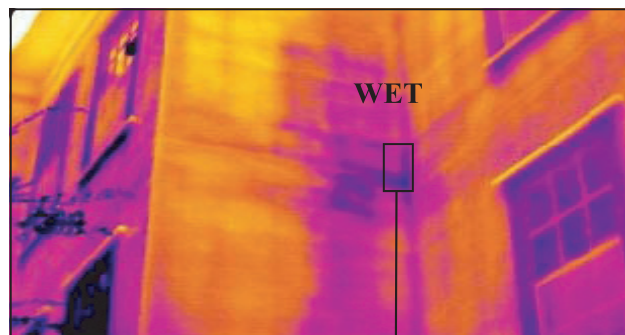
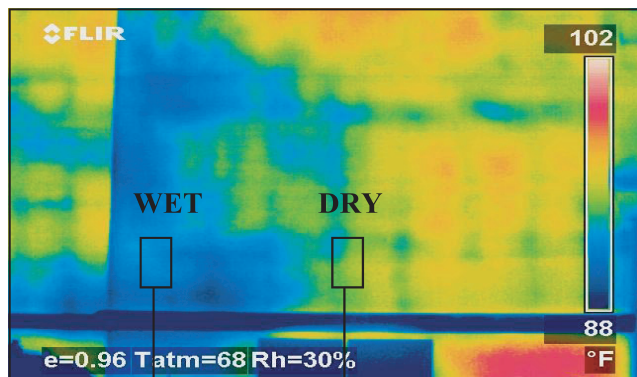




EXTERIOR CLADDING SURVEYS

- Accurate Results
- Cost Effective
- Non-Destructive
- Annual PM



Using thermal imaging, we can evaluate the condition of exterior cladding systems by mapping areas of moisture entrapment and delamination due to environmental stress.

An in-depth evaluation of the building envelope enables the architect/engineer to develop accurate specifications for contractor bidding, that will also be used during construction. The quality of the initial field evaluation reflects directly on the quality and performance of repairs, as outlined in the specification documents. A thorough investigation also promotes an efficient design specification, thereby reducing the possibility of increased costs, via change orders, due to unforeseen conditions. The time and expense to perform an initial, well-focused evaluation will save the building owner/manager money in the long run and result in repairs that extend the service life of the building.

Nationwide: (888) 317-4568 **Florida:** (239) 567-2888 **Georgia:** (770) 823-6246